

Winters in the Netherlands are long... So to avoid the winter blues in the winter of 2018-2019 Paracentrum Texel is organising a trip to South Africa, Mossel Bay. Below, a rough sketch of the plan.



We will be offering two packages - one including the flight and one without the flight. That leaves the space for participants to extend their stay in the beautiful South Africa. Exact package prices are included in application form.







Both packages include:

- Car hire (shared cars, 4 or 5 pax per car)
- Accommodation (depending on availability either in shared guest house type rooms or self catering villas, 12 nights in Mossel Bay and 2 nights in Cape Town)
- 20 jumps from 14.000ft
- Organizing and coaching

In order to keep the prices affordable and to guarantee that the plane can be filled we need minimum 15 participants!

WHEN?

Skydive Mossel Bay expects us on the 16th of February for 12 nights. 15th and 28th of February we will have accomodation in the heart of Cape Town. However, Mother city cannot be seen in 2 days, so we are flexible if someone wants to arrive earlier or leave later. Also because flying

| | | | |
|-----------------------------|---|--------------|--------------|
| TEMPERATURE |  | 19 °C | 66 °F |
| HIGH TEMPERATURE |  | 23 °C | 73 °F |
| LOW TEMPERATURE |  | 15 °C | 59 °F |
| CHANCE OF SUNNY DAY |  | 22 % | |
| CHANCE OF RAIN |  | 30 % | |
| CHANCE OF CLOUDY DAY |  | 28 % | |

during the week is considerably cheaper.

February is the last month of summer in SA. That means beautiful weather! Clouds and rain are mostly exception - wind on the other hand is often relatively strong. So same as Texel:)

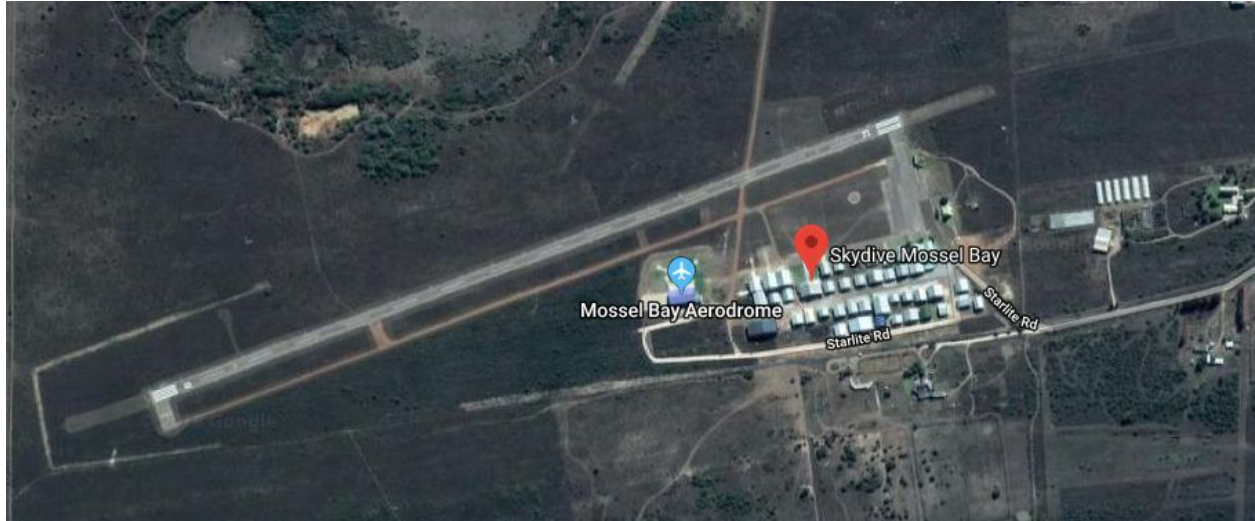
WHERE?

Skydive Mossel Bay, SA



393 km from Cape Town - along Garden route

- DZ is 8 km from Indian ocean and the beach (perfect for swimming, surfing, diving, etc.)
- 10 km to shark cage diving spots
- 66 km to Wilderness national park - known for safaris, hikes and paragliding
- 177 km to highest bungee jumping bridge in the world - Bloukrans bridge
- 285 km to Cape Agulhas - most southern tip of Africa
- 343 km to capital of wine - Paarl
- 405 km to Addo Elephant National park - second biggest safari park in South Africa



Mossel Bay is a small harbour town along the famous Garden route in South Africa. It is a favored beach holiday destination during summer months for both locals and tourists. Therefore it has plenty entertainment to offer on occasions that skydivings might not be an option:) Airport and landing areas are spacious, plenty of options when landing out. There is a possibility to land on the beach.



JUMPS

For more info: <http://www.skydivemosselbay.com/>

Two aircrafts - Cessna 182 (4 pax) and a King Air B90 (min 13 pax for a lift). They are ok with doing one load at a time and shut down to pack.

Participants will have to join PASA (Parachute Association of South Africa) for R350 p.p.

Tickets price:

R300 from 10,000 feet = 23 EUR (july'18)

R400 from 14,000 feet = 30 EUR (july'18)

NO PACKJOBS included!

1 EUR=13.5 ZAR july '18



ACCOMODATION

We will confirm exact location and setup of accommodation when we know the number of participants. It will be either guest house rooms or self catering cottages/villas/apartments. The rooms will be twin or single.

In each case we aim for:

- Close to the beach
- Close to the restaurants/bars
- Max 15 min drive to the dropzone



CAR

IMPORTANT! LEFT HAND DRIVE!

We will have minimum 4 cars available for day trips as well as DZ-home transport.

ORGANIZATION

Daily organizing as well as coaching jumps will be available. In case of more participants (20+) - there will be extra coaches.

